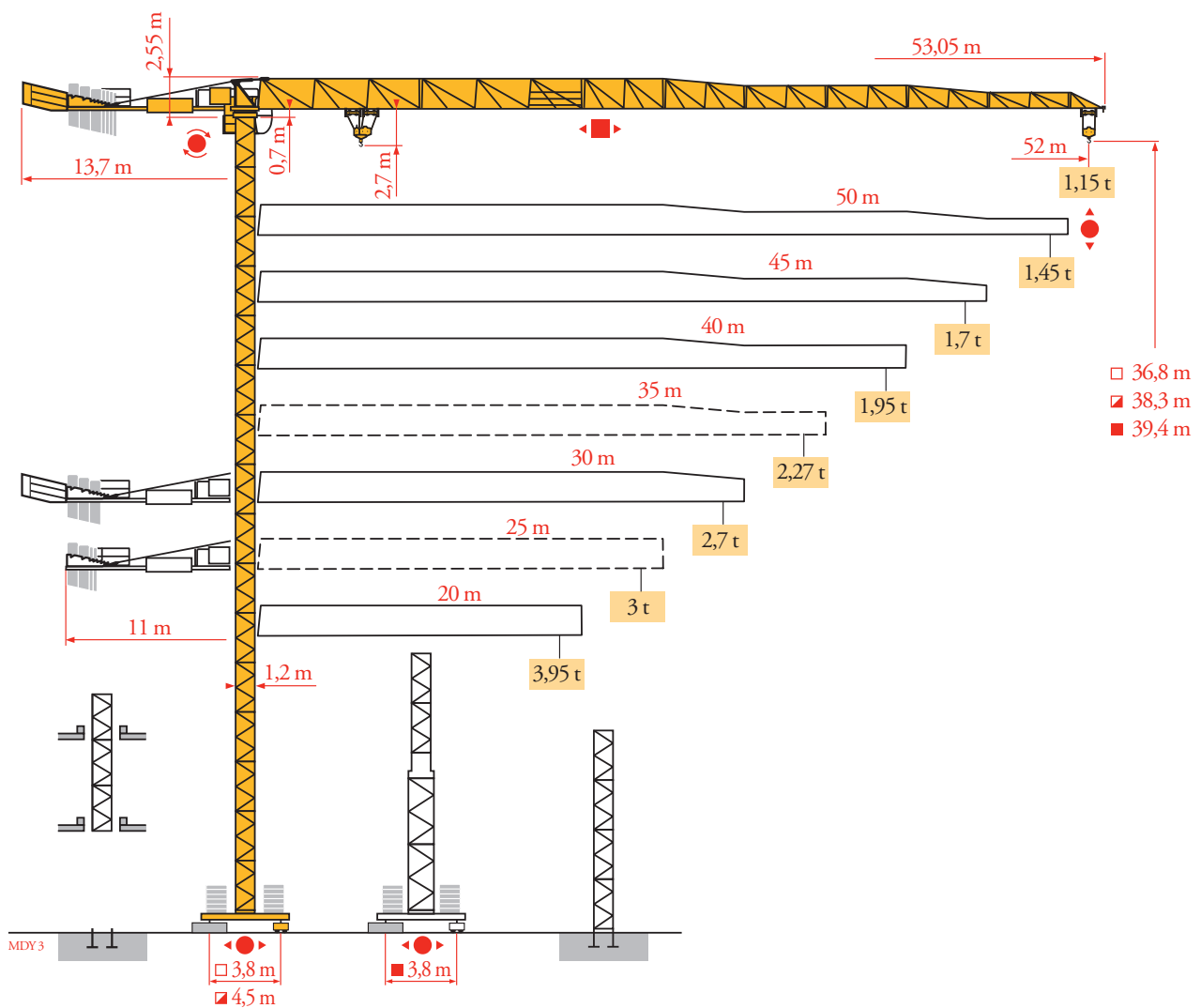


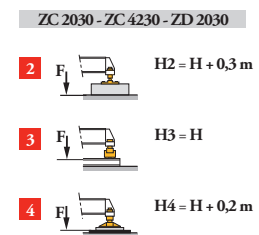
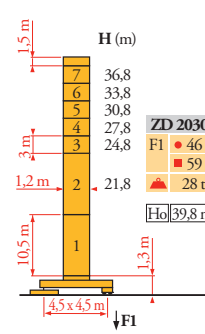
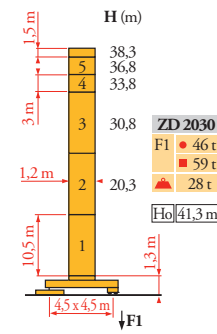
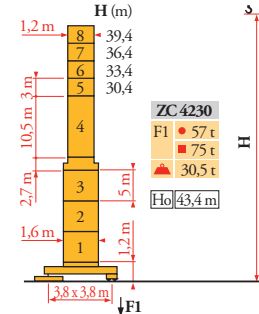
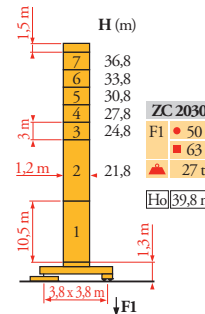
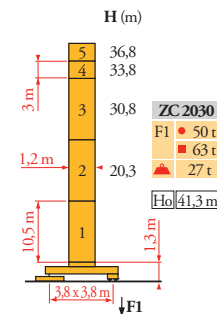
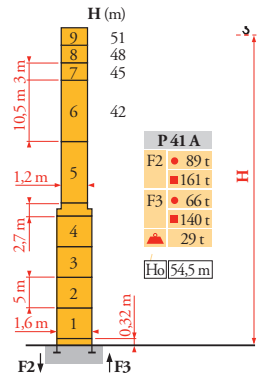
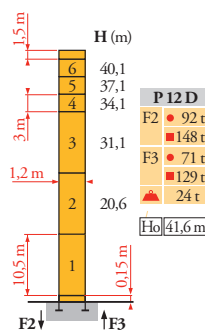
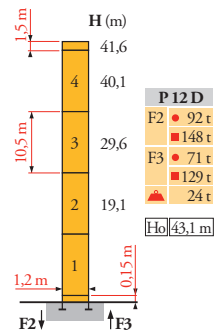
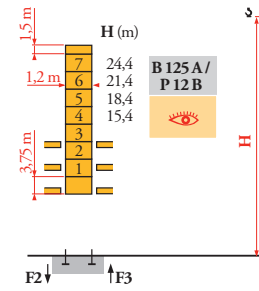
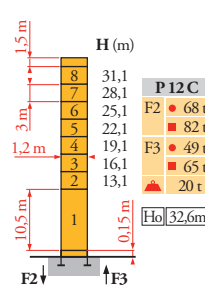
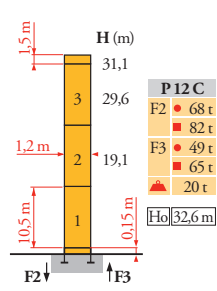
# Potain MCT 88



Mat / Réactions  
 Maste / Eckdrücke  
 Masts / Reactions  
 Mástil / Reacciones  
 Torre / Reazioni  
 Tramo / Reações  
 Композиции башни /  
 Реакции

MDYs

1,2 m  
 20 m → 52 m



FR

● Réactions en service  
 ■ Réactions hors service  
 🏠 A vide sans lest (ni train de transport) avec flèche et hauteur maximum

Ho

H sans cabine

DE

Reaktionskräfte in Betrieb  
 Reaktionskräfte außer Betrieb

Ohne Last, Ballast (und Transportachse), mit Maximalausleger und Maximalhöhe

H Ohne Fahrerhaus

EN

Reactions in service  
 Reactions out of service  
 Without load, ballast (or transport axes), with maximum jib and maximum height

H without cab

ES

Reacciones en servicio  
 Reacciones fuera de servicio

Sin carga, sin lastre, (ni tren de transporte), flecha y altura máxima

H sin cabina

IT

Reazioni in servizio  
 Reazioni fuori servizio  
 A vuoto, senza zavorra (ne assali di trasporto) con braccio massimo e altezza massima

H senza cabina

PT

Reações em serviço  
 Reações fora de serviço  
 Sem carga (nem trem de transporte)- sem lastro com lança e altura máximas

H sem cabine

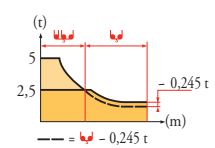
RU

Реакции при работе  
 Реакции в покое  
 Вес без груза, балласта (или транспортных осей), с максимальной длиной стрелы и максимальной высотой  
 Высота без кабины

Courbes de charges  
Lastkurven  
Load diagrams  
Curvas de cargas  
Curve di carico  
Curva de cargas  
Диаграммы грузоподъемностей

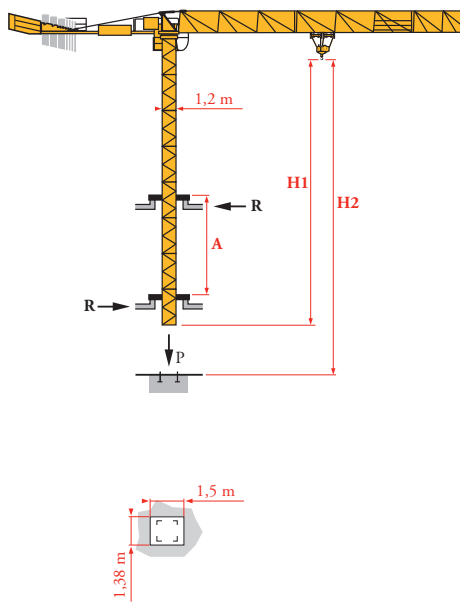
MDY 3

52 m		3,2	▶	13,7	15	17	20	22	22,9	24,3	25	26,4	27	30	32	35	37	40	42	45	47	50	52	m	
				5	4,5	3,9	3,2	2,85	-	2,5	-	2,5	2,45	2,15	2	1,8	1,7	1,55	1,45	1,3	1,25	1,15	1,1	t	
				3																			t		
50 m		3,2	▶	15,9	17	20	22	25	26,6	27	28,3	30	30,7	32	35	37	40	42	45	47	50	m			
				5	4,6	3,8	3,4	2,9	-	2,65	2,5	-	2,5	2,4	2,15	2	1,85	1,75	1,6	1,5	1,35	1,3	1,2	1,15	t
				3																			t		
45 m		3,2	▶	16,3	17	20	22	25	27	27,4	29,1	30	31,6	32	35	37	40	42	45	m					
				5	4,8	3,9	3,5	3	2,75	-	2,5	-	2,5	2,45	2,2	2,1	1,9	1,8	1,65	t					
				3																			t		
40 m		3,2	▶	16,3	17	20	22	25	27	27,4	29,1	30	31,6	32	35	37	40	m							
				5	4,8	3,9	3,5	3	2,75	-	2,5	-	2,5	2,45	2,2	2,1	1,9	t							
				3																			t		
35 m		3,2	▶	16,3	17	20	22	25	27	27,4	29,1	30	31,6	32	35	m									
				5	4,8	3,9	3,5	3	2,75	-	2,5	-	2,5	2,45	2,22	t									
				3																			t		
30 m		3,2	▶	16,3	17	20	22	25	27	27,4	29	30	m												
				5	4,8	3,9	3,5	3	2,75	-	2,5	2,5	t												
				3																			t		
25 m		3,2	▶	16,3	17	20	22	25	m																
				5	4,8	3,9	3,5	3	t																
				3																			t		
20 m		3,2	▶	16,3	17	20	m																		
				5	4,8	3,95	t																		
				3																			t		

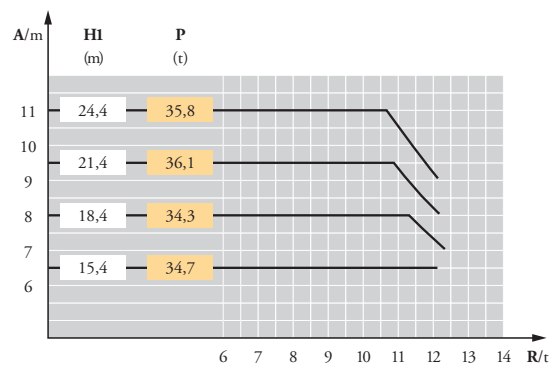


Télescopage sur dalles  
Kletterkrane im Gebäude  
Climbing crane  
Telescopage gruas trepadoras  
Gru in cavedio  
Telescopagem sobre lages  
Кран, ползущий внутри здания

MDY 4






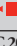




B 125 A

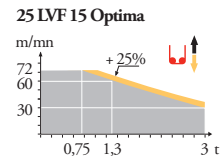
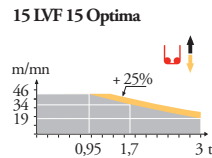
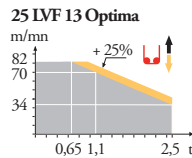
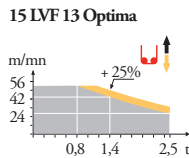


	FR	DE	EN	ES	IT	PT	RU
<b>A</b>	Distance entre cadres	Abstand zwischen den Rahmen	Distance between collars	Distancia entra marcos	Distanza fra i telai	Distância entre quadros	Расстояние между рамками крепления
<b>H1</b>	Hauteur grue	Kranhöhe	Crane height	Altura grúa	Altezza gru	Altura da grua	Высота крана
<b>P</b>	Poids de la grue(en service)	Krangewicht (in Betrieb)	Crane weight (in service)	Peso de la grúa (en servicio)	Peso della gru (in servizio)	Peso da grua (em serviço)	Вес крана (при работе)
<b>R</b>	Réaction horizontale	Horizontalkräfte	Horizontal reaction	Reaccion horizontal	Reazione orizzontale	Reacção horizontal	Горизонтальные реакции
	Voir télescopage sur dalles	Siehe Kletterkrane im Gebäude	See climbing crane	Vea grua trepadora	Consultare gru in cavedio	Ver telescopagem sobre lages	См. кран, ползущий внутри здания

Mécanismes  
Antriebe  
Mechanisms  
Mecanismos  
Meccanismi  
Mecanismos  
Механизмы

MDY 6

			U					UU					ch-PS hp	kW		
	15 LVF 13 Optima	m/min t	2,8 → 7,6 → 24 → 42 → 56	1,4	3,8	12	21	28	1,4	3,8	12	21	28	15	11	200 m
	25 LVF 13 Optima	m/min t	4 → 11 → 34 → 56 → 70 → 82	2,5	2,5	2,5	1,4	0,8	5	5	5	2,8	1,6	25	18	329 m
	15 LVF 15 Optima	m/min t	2,3 → 6,1 → 19 → 34 → 46	3	3	3	1,7	0,95						15	11	159 m
	25 LVF 15 Optima	m/min t	3,6 → 9,6 → 30 → 48 → 60 → 72	3	3	3	1,7	1,3	0,75						25	18
	RVF 61 Optima +	tr/min U/min - rpm	0 → 0,8										7,5	5,5		
	4 DVF 3	m/min	0 → 63										5	3,7		
ZC 2030 ZD 2030 	RT 224	m/min	25										2 x 4	2 x 2,9		
ZC 4230 	RT 324	m/min	12,5 - 25										2 x 7	2 x 5,2		
																
400 V(+10% -10%) 50 Hz / 480 V(+ 6% -10%) 60 Hz						15 LVF : 25 kVA 25 LVF : 35 kVA										



FR

Levage  
Distribution  
Orientation  
Translation

DE

Heben  
Katzfahren  
Schwenken  
Kranfahren

EN

Hoisting  
Trolleying  
Slewing  
Travelling

ES

Elevación  
Distribución  
Orientación  
Traslación

IT

Sollevamento  
Distribuzione  
Rotazione  
Traslazione

PT

Elevação  
Distribuição  
Rotação  
Translação

RU

Подъем  
Перемещение каретки  
Поворот  
Перемещение крана



Document commercial non contractuel. Pour toute information technique se référer à la notice correspondante.

Unverbindliches Vertriebsdokument. Für technische Informationen, siehe die entsprechenden Anweisungen.

This commercial document is not legally binding. For any technical information, please refer to the corresponding instructions.

Documento commercial no contractual. Para cualquier información técnica, ver la noticia correspondiente.

Documento commerciale non vincolante, per tutte le informazioni tecniche fare riferimento al catalogo istruzioni.

Documento comercial não contratual. Para qualquer informação técnica complementar consultar as respectivas instruções.

Этот коммерческий документ не является юридически обязательным. Для получения технической информации, см. соответствующие инструкции.



**Manitowoc - Americas - World Headquarters**  
2400 S. 44th Street • Manitowoc • WI 54220 USA  
Tel: +1 920 684 4410 • Fax: +1 920 652 9778

**Manitowoc - Europe, Middle East & Africa**  
Ecully, France  
18, rue de Charbonnières B.P. 173 • 69132 ECULLY Cedex • FRANCE  
Tel: +33 (0)4 72 18 20 20 • Fax: +33 (0)4 72 18 20 00

**Manitowoc - Asia Pacific**  
16F Xu Hui Yuan Building,  
1089 Zhongshan No.2 Road (S) • Shanghai 200030 China  
Tel: +86 21 6457 0066 • Fax: +86 21 6457 4955